



# POCKET PROGRAM

PLANNING AND MEMBERSHIP GUIDELINES

NORWESCON 38



# NORWESCON 38

The Northwest Science Fiction Society  
proudly presents  
Norwescon 38: Distant Horizons, Epic Adventures  
The Thirty Eighth Annual Northwest Regional  
Science Fiction & Fantasy Convention

*Except where noted, contents*

*Copyright © 2015 Norwescon for the contributors.  
All opinions expressed in this publication are those  
of the authors and not necessarily those of  
Science Fiction Northwest, Norwescon or  
the Northwest Science Fiction Society.*

COVER & B&W SKETCHES © JULIE DILLON

Your **POCKET PROGRAMS** contains all kinds of cool stuff. It has Norwescon's policy for attendance, including our **harrassment policy**. There are schedules for **events**, information on those events, **services available**, **maps**, and **convention hours**.

For further information about the convention go to the **Information Table** located in the **convention space lobby**.

Remember to check out the **DAILY ZINE**, which has any changes or updates to the programming schedule.

Your **POCKET PROGRAM** and **EVENT DESCRIPTIONS** are broken up into **three books** for easy transportation.

Norwescon Member's Guide, harrassment policy, and panels by subject, make up the **PLANNING GUIDE**.

Thursday and Friday make up **EVENT BOOK 1**.

Saturday and Sunday make up **EVENT BOOK 2**.

*Writer Guest of Honor*  
**GEORGE R.R. MARTIN**

*Artist Guest of Honor*  
**JULIE DILLON**

*Science Guest of Honor*  
**AMY MAINZER**

*Publisher*  
**RANDOM HOUSE**

# NORWESCON 38



*Graphic Design*  
**DONIEL  
KAUFMAN**

REGISTRATION

Thursday noon - 10 pm  
 Friday 9 am - 10 pm  
 Saturday 9 am - 10 pm  
 Sunday 9 am - 5 pm

CONVENTION OFFICE  
 (WING 7 - 7106)

Thursday 9 am - 9 pm  
 Friday 9 am - 9 pm  
 Saturday 9 am - 9 pm  
 Sunday 9 am - 12 pm

CLOAK ROOM  
 (WING 7 - 7101)

Thurs noon - Sun 6 pm

VOLUNTEER'S LOUNGE

Thursday noon - 9:00 pm  
 Friday 8:30 am - 9:00 pm  
 Saturday 8:30 am - 9:00 pm  
 Sunday 8:30 am - noon

HOSPITALITY

Thursday noon - 5 pm, 6 pm - 11 pm  
 Friday 9 am - 5 pm, 6 pm - 11 pm  
 Saturday 9 am - 5 pm, 6 pm - 11 pm  
 Sunday 9 am - 2 pm

DEALERS' ROOM

Thursday 4 pm - 8 pm  
 Friday 10 am - 7 pm  
 Saturday 10 am - 6 pm  
 Sunday 10 am - 4 pm

ART SHOW

Friday 10 am - 8 pm  
 Saturday 10 am - 7 pm  
 Sunday 10 am - 2:30 pm

ART IN ACTION

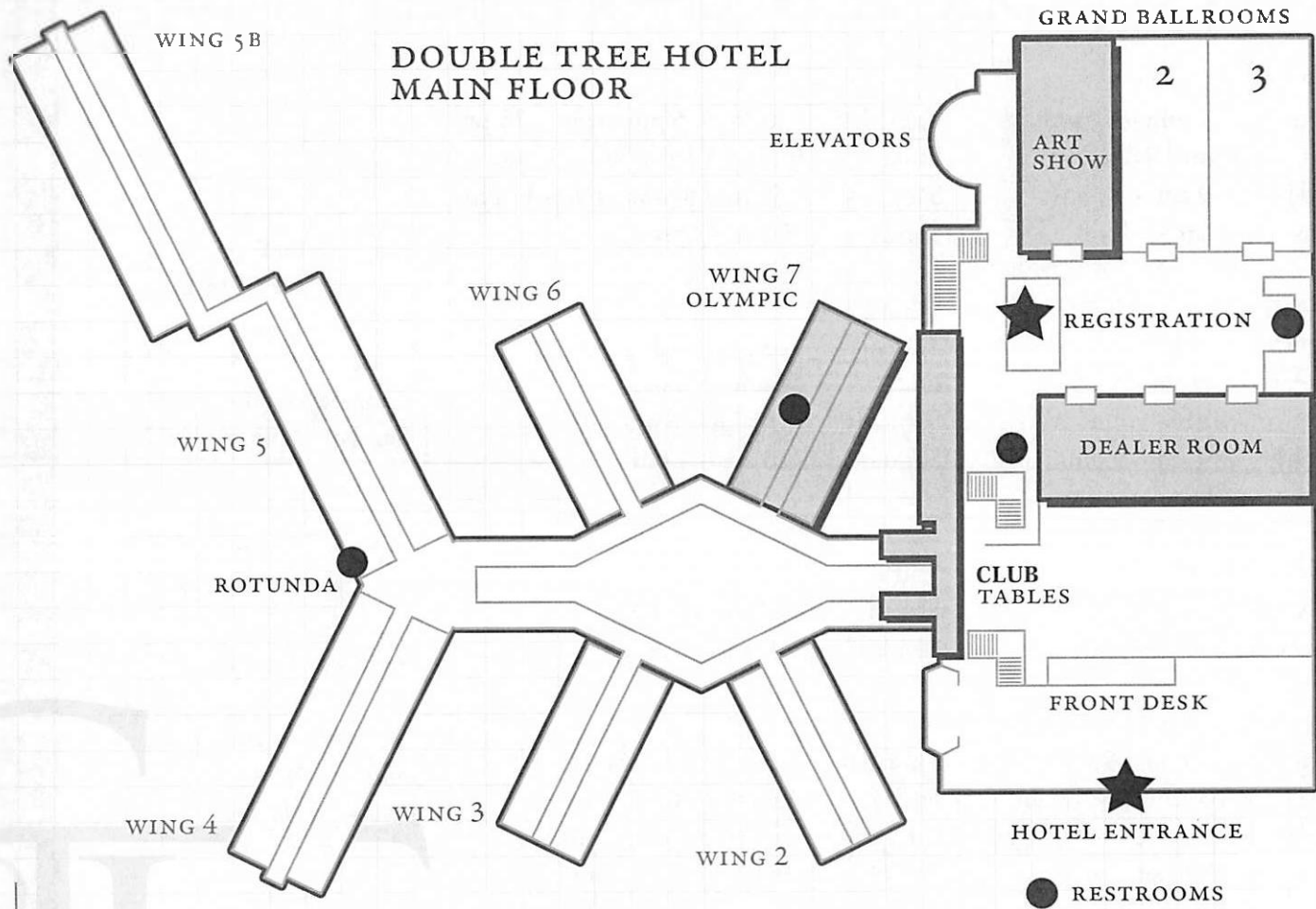
Thursday 3:30 pm - 6:30 pm  
 Friday 9:30 am - 6:30 pm  
 Saturday 9:30 am - 6:30 pm  
 Sunday 9:30 am - 1:30 pm

SECURITY,  
 LOST & FOUND  
 CON OFFICE  
 (OLYMPIC 3)  
 Thursday 9 am -  
 Sunday 12 pm

*Convention Security  
 Office is closed between  
 the hours of 3 am and  
 7 am Friday, Satur-  
 day, and Sunday.*

*Security available by  
 dialing 77108 from  
 any hotel phone.*

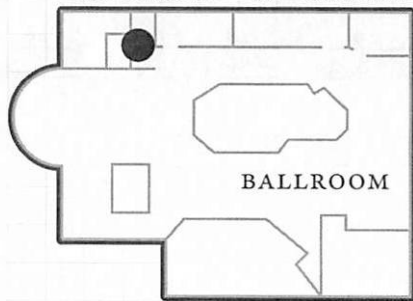
# DOUBLE TREE HOTEL MAIN FLOOR



# MAXI'S - TOP FLOOR OF TOWER

MT BAKER MT RAINIER

ELEVATORS



HOSPITALITY  
OLYMPIC 2

## WING 7

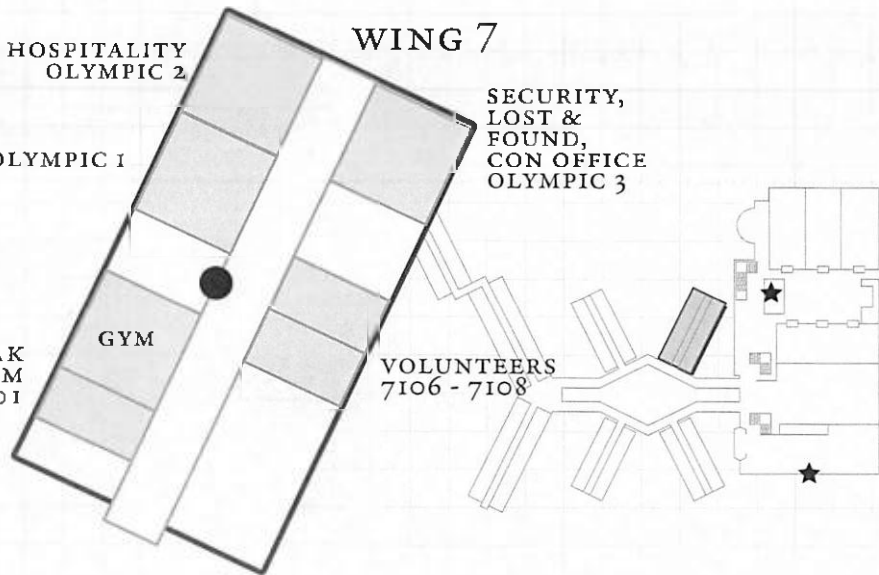
SECURITY,  
LOST &  
FOUND,  
CON OFFICE  
OLYMPIC 3

OLYMPIC 1

DAK  
ROOM  
101

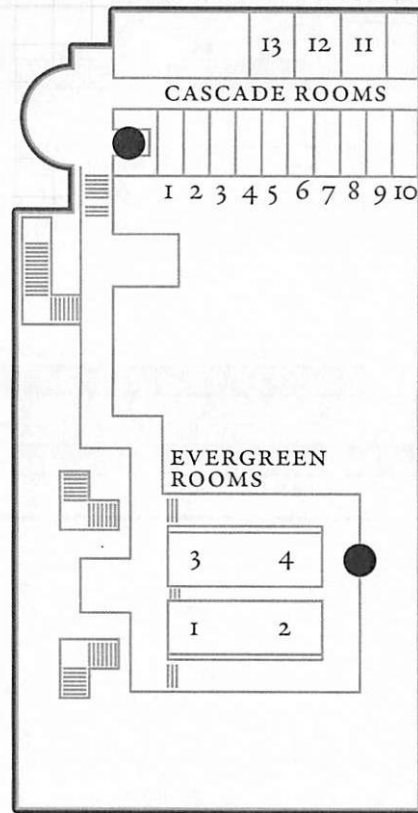
GYM

VOLUNTEERS  
7106 - 7108



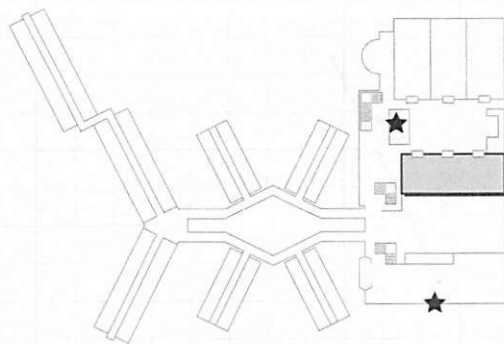
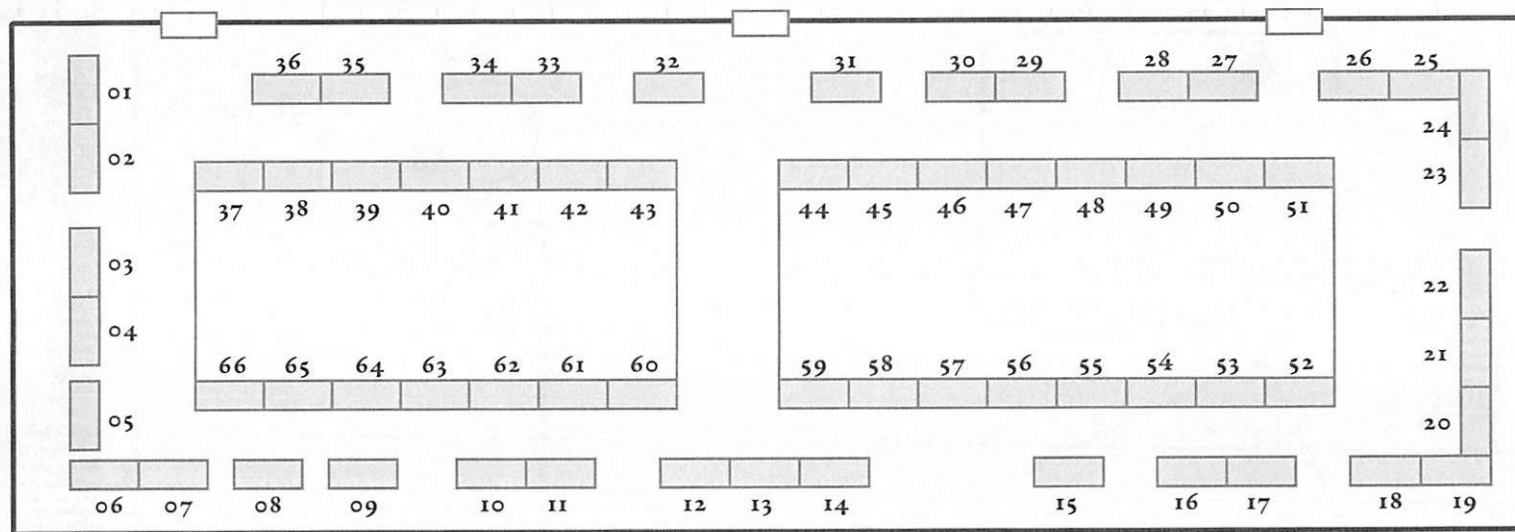
# SECOND FLOOR

ELEVATORS

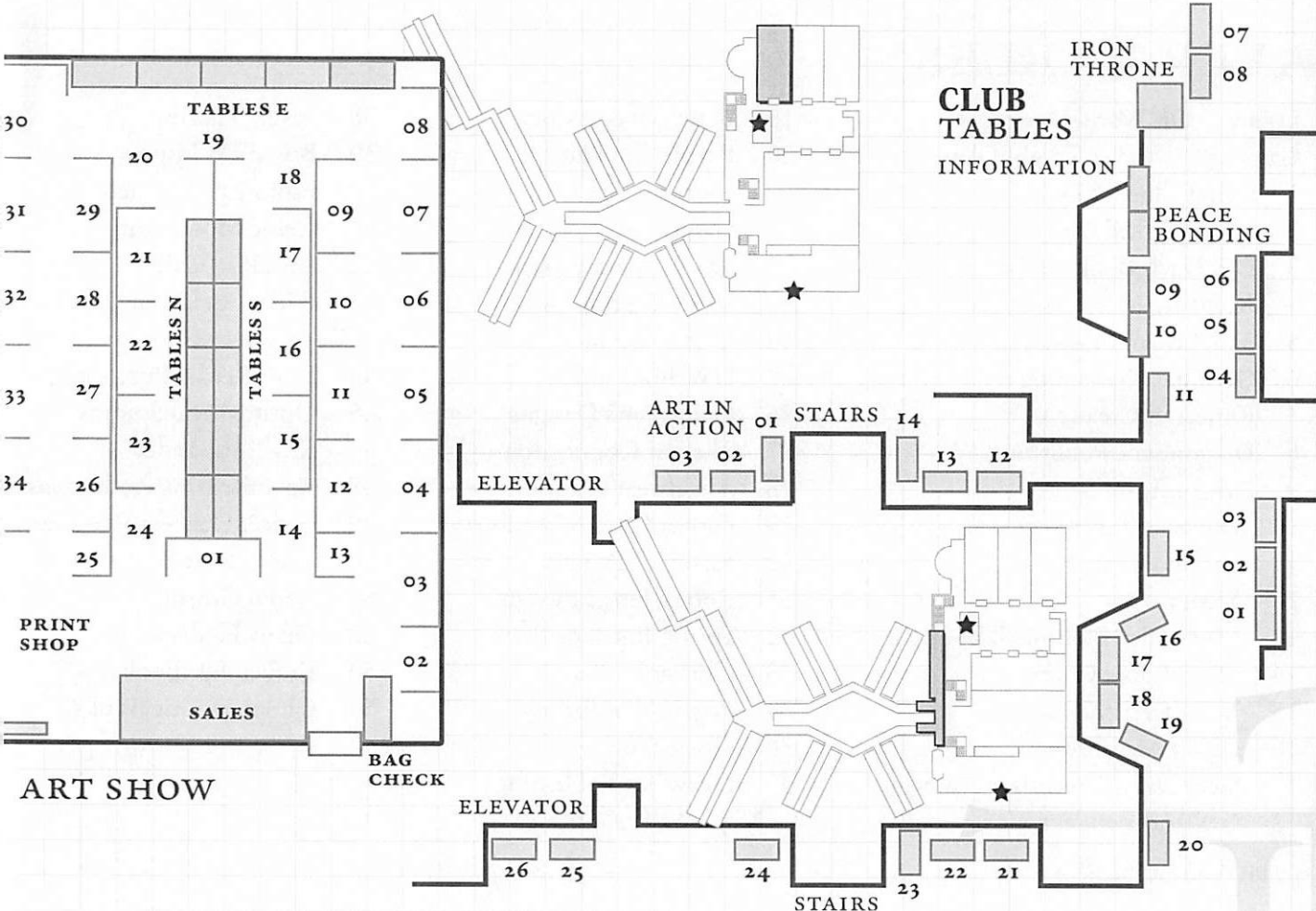


RESTROOMS

# DEALER ROOM







# DEALER TABLES

- |        |                                 |    |   |    |  |
|--------|---------------------------------|----|---|----|--|
| Lobby  | Off World Designs               | 19 | B. Brown & Assoc.                               | 38 | Pavel's Puzzles                              |
| Gaming | Forever Knight Games            | 20 | Purple Top Hat:<br>The Art of Celine Chapus     | 39 | Brigid's Whispers                            |
| 1      | Gem Games & Hobbies             | 21 | Games Plus                                      | 40 | Espionage Cosmetics                          |
| 2      | Steampunked Out                 | 22 | Van Zee Magic Dragon Pets                       | 41 | Celtic Moonlighting                          |
| 3      | Phil Davis Books & Treasures    | 23 | Honeck Sculpture                                | 42 | Let's Play Café                              |
| 4      | Xcentricities – Corset.net      | 24 | Everett Comics                                  | 43 | Friday Afternoon Tea<br>Royal Ravens Gourmet |
| 5      | Meg Lyman Illustration          | 25 | UW Bookstore                                    | 44 | Dark Repast Publishing                       |
| 6      | GeekStar Costuming              | 26 | Gunga Jen's Designs                             | 45 | Optimystical Studios                         |
| 7      | Runecraft Creations             | 27 | The Fur Connection                              | 47 | K.M. Alexander                               |
| 8      | Dragondyne Publishing           | 28 | Angelwear Creations                             | 48 | Apocalypse Ink Productions                   |
| 9      | Dragonstorm Sports              | 29 | Clover Creek Creations                          | 49 | Nick & Elizabeth Valentino                   |
| 10     | Darkstars Creation              | 30 | Realm of Regalia                                | 50 | TANSTAAFL Press                              |
| 11     | Studio Djaru                    | 31 | Rob & June Edwards                              | 51 | Caren Gussoff                                |
| 12     | Mishu                           | 32 | Springtime Creations                            | 52 | Diana Lanham                                 |
| 13     | Miss Haley Bombshell Boutique   | 33 | Chronos Gifts                                   | 53 | Broken Eye Books                             |
| 14     | Silverthorne Crafts             | 34 | Pegasus Publishing                              | 54 | Chooseomatic Books                           |
| 15     | Robert Tritthardt               | 36 | Cargo Cult                                      |    |  |
| 16     | La Vie Macabre                  | 37 | Freevalley Publishing /<br>Maple Valley Writers |    |  |
| 17     | SteelCraft / Legends of Camelot |    |   |    |  |
| 18     | NW Independant Writer's Assoc.  |    |   |    |  |

# CLUB TABLES

- 1 PNWA—Pacific Northwest Writers Association  
pnwa.org
- 2 Kirkland Geek Gala kirklandgeekgala.com
- 3 EMP Museum empmuseum.org
- 4 Seattle UFO Network meetup.com/seattleufo  
The Steve Strout Comic Book Swap Meet  
thestevestrout.com
- 5 Merchants of Deva merchantsofdeva.com  
Primitive Festival Alliance summerstar.org
- 6 OrcaCon orcacon.org
- 7 Northwest Science Fiction Society (NWSFS) nwsfs.com
- 8 47 North apub.com/imprint-detail?imprint=5
- 9 Sasquan—Worldcon in 2015 in Spokane sasquan.org
- 10 Imperial Starbase Society impstar.org
- 11 DC17 dc17.org
- 12 Foolscap foolscap.org  
Rustycon rustycon.org
- 13 Westercon 69 westercon69.org
- 14 Dublin 17 dublin2019.com  
MidAmeriCon II midamericon2.org
- 15 Time Wars TimeWarsUniverse.com
- 16 The Greater Seattle Bureau of  
Fearless Ideas fearlessideas.org
- 17 Cascade Writers cascadowriters.com
- 18 Mysterium mysterium.net
- 19 Crypticon Seattle crypticonseattle.com
- 20 Anglicon: The Regeneration anglicon.com
- 21 The Royal Manticoran Navy/Tenth Fleet  
trmn.org
- 22 National Space Society chapters.nss.org/wa/seattle
- 23 Beyond Reality Costumers Guild brcg.org
- 24 The Hands That Heal Center  
For The Healing Arts handsthathealcenter.com
- 25 (*Saturday only*) Althea the Face Painter  
partypop.com/vendor/  
Aletha-the-Face-Painter/4274521
- 26 (*Saturday only*) Dravenwood Village  
dravenwood.com

# ART SHOW TABLES

- 1 Julie Dillon
- 2 Braden Duncan  
L. Pierce Ludke
- 3 Lee Moyer  
Mark Brill  
Ruth Hackney
- 4 Rob Carlos
- 5 Eric Vargas  
Theresa Halbert
- 6 Jeff Sturgeon
- 7 Jeliza Patterson  
Lizzy D  
Michaela Zielke
- 8 A.Ka  
Laura Grover  
Sandra Ackley
- 9 Mark Ferrari
- 10 Douglas Herring  
Margaret Organ-Kean
- 11 Liv Rainey-Smith
- 12 Kevin Radthorne  
Laurie Noel  
Mark Sutton
- 13 Christy Grandjean

- 14 David Lee Pancake  
Shaughnessy
- 15 Grillghod
- 16 Durlyn  
Laura Tempest Zakroff
- 17 Shellay Lynne Maughan
- 18 Rachel Farrell  
Theresa Mather
- 19 Alan F. Beck  
Gwen Gyldenege  
Miriam Keith  
Lupa
- 20 Annie Stegg  
Coriander Dezotell  
Michael Duquette
- 21 Jasmine Zellmer
- 22 Erika Rae Heins  
Jo Brown  
Shelley George
- 23 Krab Jab Studio
- 24 Bryan Syme
- 25 Diana Levin  
Eden Hopkins
- 26 The Gorgonist

- 27 Belsac  
Eveningangel
- 28 Cori Dietsch  
Ed Matuskey
- 29 Camille Meehan  
Lee Wilson
- 30 Mark Roland  
Sandra Santara
- 31 Sarah Clemens
- 32 Betsy Mott  
Heather Gamble
- 33 Andy Vanoverberghe
- 34 Richard Hescox

## Table E

- Angela Jones-Parker  
Barbara Wallen  
Butch Honeck  
Diana Daniels  
Elaine Woodhouse  
Gempunk  
Katherine Howes  
Keith Amarak Waters  
Sarah Alexander

## Table N

- Miriam Keith  
Jo Brown  
Josh Foreman  
Lupa  
Marjorie Stratton  
Mark Ix  
Peg Gyldenege  
Ruth Peterson

## Table S

- David Lee Pancake  
Designs By Victoria  
Gwen Gyldenege  
Lynne Magie  
Mike Rerick  
Patty A Watson  
Rebecca Sweeney  
Shaughnessy

# ART SHOW TOURS

Richard Hescocx Fri 1 p.m.—2 p.m.

Lee Moyer Sat 1 p.m.—2 p.m.

## Art Show Tour with Richard Hescocx

1 p.m.—2 p.m. Art Show

Richard Hescocx talks in depth about his work in the show and shares his thoughts about selected other works as well. Come enjoy an artist's perspective on the Norwescon Art Show!

*Richard Hescocx*

## Art Show Tour with Lee Moyer

1 p.m.—2 p.m. Art Show

Lee Moyer talks in depth about his work in the show and shares his thoughts about selected other works as well. Come enjoy an artist's perspective on the Norwescon Art Show!

*Lee Moyer*

Bryan Syme Sat 3pm-4pm.

Jeff Sturgeon Sat 5pm-6pm.

## Art Show Tour with Bryan Syme

3 p.m.—4 p.m. Art Show

Bryan Syme talks in depth about his work in the show and shares his thoughts about selected other works as well. Come enjoy an artist's perspective on the Norwescon Art Show!

*Bryan Syme*

## Art Show Tour with Jeff Sturgeon

5 p.m.—6 p.m. Art Show

Jeff Sturgeon talks in depth about his work in the show and shares his thoughts about selected other works as well. Come enjoy an artist's perspective on the Norwescon Art Show!

*Jeff Sturgeon*

# NORWESCON TV LISTINGS: CHANNEL 46

## THURSDAY

- 3:00 pm **The Phantom Empire** (1935)<sup>2</sup>  
7:00 pm **Star Wreck: In the Pirkinig** (TV-14)  
8:40 pm **The Atomic Man** (PG-13) (1955)<sup>1</sup>  
9:55 pm **Monster A.K.A. Monstroid** (R) (1980)<sup>1</sup>  
11:35 pm **Horror Express** (R) (1972)<sup>1</sup>

## FRIDAY

- 1:05 am **Invasion of the Bee Girls** (R) (1973)<sup>1</sup>  
2:30 am **The Eye Creatures** (1965) (TV Movie)  
3:50 am **Body of the Prey** (1970)<sup>1</sup>  
5:20 am **Evil Brain From Outer Space**  
(1965) (TV Movie)  
6:40 am **Voyage to the Prehistoric Planet** (1965)<sup>1</sup>  
7:55 am **The Amazing Transparent Man** (1960)<sup>1</sup>  
8:50 am **Attack From Space** (1965) (TV Movie)  
10:10 am **The Green Hornet Strikes Again!** (1940)<sup>2</sup>  
3:00 pm **The Lost World** (G) (1925) *Fantasy*<sup>1</sup>  
4:45 pm **Flash Gordon Conquers the Universe**  
(1940)<sup>2</sup>

- 8:25 pm **It's Alive!** (TV-14) (1969 TV Movie)  
9:45 pm **Atomic Rulers Of The World**  
(TV-14) (1965) (TV Movie)  
11:10 pm **Transatlantic Tunnel** (1935)<sup>1</sup>

## SATURDAY

- 12:45 am **The Lost City** (1935)<sup>2</sup>  
4:45 am **Last Woman on Earth** (1960)<sup>1</sup>  
5:55 am **Rocketship X-M** (1950)<sup>1</sup>  
7:10 am **The Lucifer Complex** (1978)<sup>1</sup>  
8:45 am **Night Fright** (1967)<sup>1</sup>  
10:00 am **Metropolis** (PG) (1927)<sup>1</sup>  
12:25 pm **Non-Stop New York** (1937)<sup>1</sup>  
1:35 pm **Arrest Bulldog Drummond** (1939)<sup>1</sup>  
2:30 pm **Captain America** (1944)<sup>2</sup>  
6:35 pm **Jack and the Beanstalk** (1952) (Fantasy)<sup>1</sup>  
8:00 pm **Slipstream** (PG-13) (1989)<sup>1</sup>  
9:45 pm **Doomsday Machine** (1972)<sup>1</sup>  
11:05 pm **Sword of Lancelot** (1963) (Fantasy)<sup>1</sup>

## SUNDAY

- 1:00 am **This Is Not a Test** (1962) <sup>1</sup>
- 2:10 am **Mesa of Lost Women** (1953) <sup>1</sup>
- 3:20 am **UFO: Target Earth (G)** (1974) <sup>1</sup>
- 4:40 am **Santa Claus Conquers  
the Martians** (1964) <sup>1</sup>
- 6:10 am **Voyage To The Planet  
Of Prehistoric Women** (1968) <sup>1</sup>
- 7:35 am **The Atomic Brain** (1963) <sup>1</sup>
- 8:35 am **Cosmos: War of the Planets  
(PG)** (1977) <sup>1</sup>
- 10:05 am **Idaho Transfer (PG)** (1973) <sup>1</sup>
- 11:30 am **The Manster** (1959) <sup>1</sup>
- 12:45 pm **The Atomic Submarine** (1959) <sup>1</sup>

# SPECIAL FUNCTIONS: GOH & NORWESCON

Thursday Autograph Session: George R.R. Martin Thu 2:00pm Evergreen 3&4

GOH Banquet Thu 5:00pm Grand 2

Hugo Nomination Announcement Sat 12:00pm Evergreen 1&2

Norwescon Art & Charity Auction Sun 11:30am Grand 2

Onions & Roses Sun 5:00pm Evergreen 3&4

Philip K. Dick Awards Fri 7:00pm Grand 2



## SPECIAL FUNCTIONS: CONCERTS

- Concert: 9k1 Thu 8:00pm Evergreen 1&2
- Concert: Death\*Star Thu 9:00pm Evergreen 1&2
- Concert: Rai Kamishiro Thu 10:00pm Evergreen 1&2
- Concert: Bards of a Feather Fri 7:00pm Evergreen 1&2
- Concert: Leannan Sidhe Fri 8:00pm Evergreen 1&2
- Concert: PDX BroadSides Fri 9:00pm Evergreen 1&2
- Concert: Starlight Fri 10:00pm Evergreen 1&2
- Concert: Kadesh Flow Sat 8:00pm Evergreen 1&2
- Concert: Molly Lewis Sat 9:00pm Evergreen 1&2
- Concert: Vixy & Tony Sat 10:00pm Evergreen 1&2

## SPECIAL FUNCTIONS: SPECIAL EVENTS

Norwescraft 38: A Game of Blocks Thu 12:00pm Rotunda 1

Doors Open for Opening Ceremonies Thu 6:30pm Grand 3

Opening Ceremonies Thu 7:00pm Grand 3

AI-U: Digital Scavenger Hunt Thu 8:00pm Cascade 2

Lazer Tag Thu 9:00pm Grand 2

Thursday Dance: The Quest Thu 9:00pm Grand 3

Nerf Thu 11:00pm Grand 2

Midnight Movie: Young Frankenstein Thu 12:00am

AI-U: Digital Scavenger Hunt Fri 10:00am Cascade 2

Norwescraft 38: A Game of Blocks Fri 9:00am Rotunda 1

All-Ages Dance Fri 8:00pm Evergreen 3&4

Burlesque Fri 9:00pm Grand 2

Friday Dance: Resonance with DJ Stratacaster Fri 11:00pm Grand 2

Midnight Movie: Rocky Horror Picture Show Fri 12:00am Evergreen 1&2

Norwescraft 38: A Game of Blocks Sat 9:00am Rotunda 1

Hero Corps Sat 10:00am Evergreen 3&4

Single Pattern Contest: Judging Sat 12:00pm Cascade 2

Single Pattern Contest: Show & Share Sat 5:00pm Cascade 2

- Kids Masquerade Staging Sat 6:00pm Cascade 2
- Masquerade Judging - Closed Room Sat 7:00pm Cascade 2
- Doors Open for Masquerade Sat 7:00pm Grand 2
- Masquerade Sat 7:30pm Grand 2
- Lazer Tag Sat 8:00pm Evergreen 3&4
- Saturday Dance: Loading dance profile information, please standby... Sat 10:00pm Grand 2
- Nerf Sat 11:00pm Evergreen 3&4
- Midnight Movie: Galaxy Quest Sat 12:00am Cascade 13
- Norwescraft 38: A Game of Blocks Sun 9:00am Rotunda 1
- Masquerade Viewing Sun 10:00am Evergreen 1&2
- Cascadia Commons: A Walk in the Square Sun 10:00am Grand 3
- Closing Ceremonies Sun 4:00pm Evergreen 3&4
- Masquerade Pre-Meeting Fri 6:00pm Cascade 2
- Masquerade Pre-Meeting Sat 11:00am Cascade 2

## SPECIAL FUNCTIONS: MISC. EVENTS

- Thursday Afternoon Cookies Thu 3:00pm Cascade 5  
How To Give Good Panel Thu 6:00pm Cascade 12  
Art Show Reception Thu 8:00pm Art Show  
Best of SF/SFF Film Screening Thu 8:00pm Cascade 13  
Esperanto: Language of Hope... & Sci-Fi! Thu 9:00pm Cascade 6  
The Undiscovered Country: In Memorium Thu 10:00pm Cascade 12  
Neutrinos Blast Right Through You! Fri 11:00am Cascade 5  
Where Is My Power Armor? Fri 12:00pm Cascade 12  
The Broad Universe Rapid Fire Reading Fri 4:00pm Cascade 9  
Convention Membership 101 Fri 8:00pm Cascade 7&8  
Reading "The Eye of Argon" Fri 10:00pm Cascade 3&4  
Philip K. Dick Award: What It Is, What It Means Sat 10:00am Cascade 9  
The Art of NOT Making People Sat 12:00pm Cascade 6  
SF & Fantasy Themes In Metal Music Sat 2:00pm Cascade 10  
Autograph Session 1 Sat 2:00pm Grand 2  
Geek Geek -- Don't Tell Me! Sat 3:00pm Cascade 13  
Autograph Session 2 Sat 3:00pm Grand 2  
Simon R. Green Presents "Judas Ghost" Sat 8:00pm Cascade 13

World Premiere at Norwescon: "Flesh of my Flesh" Sat 10:00pm Cascade 13  
 What Is Science, Anyway? Who Cares? Sun 12:00pm Evergreen 3&4  
 Mapping Demo Sun 1:00pm Cascade 13  
 Friends of Bill W. Thu 10:00pm Cascade 2  
 Friends of Bill W. Fri 10:00pm Cascade 2  
 Friends of Bill W. Sat 10:00pm Cascade 2

## PANELS BY SUBJECT: ART

- Art in Action **Art in Action: Needle Felting** Sat 10:00am Cascade 12  
Art in Action **Art in Action: Make Your Favorite Emblem** Sun 10:00am Cascade 12  
**Indulge Your Inner Kindergartener** Thu 5:00pm Cascade 12  
**The Art of Reference** Thu 8:00pm Cascade 12  
**Sci-Fi/Fantasy Pictionary** Thu 9:00pm Cascade 12  
**Space Art: The Most Distant Horizon** Fri 11:00am Cascade 12  
**Creativity & Disabilities** Fri 12:00pm Cascade 10  
**Monster Mash for Mature Mad Scientists** Fri 1:30pm Cascade 12  
**The Art of Lee Moyer** Fri 2:00pm Cascade 13  
**Forgotten Victorian Fantasy Masterpieces** Fri 3:00pm Cascade 13  
**Figure Drawing Workshop: Models in Costume** Fri 4:00pm Cascade 12  
**The Business of Art** Fri 5:00pm Cascade 12  
**Pulp Cover Art** Fri 6:00pm Cascade 13  
**Duelling Easels** Sat 11:00am Cascade 12  
**Alien & Fantasy Biology** Sat 12:00pm Cascade 12  
**Monster Mash for the Budding Bioengineer** Sat 1:30pm Cascade 12  
**The Art of Richard Hescox** Sat 2:00pm Cascade 13

- Reinventing the Fantasy Cover Sat 4:00pm Cascade 10  
Illustrating George R. R. Martin Sat 4:00pm Evergreen 3&4  
Escher Girls & the Hawkeye Initiative Sat 5:00pm Cascade 13  
Introduction to Medieval & Renaissance Manuscript Art Sun 10:00am Cascade 13  
Defeating Artist's Block Sun 11:00am Cascade 12  
Ink & Blocks Sun 12:00pm Cascade 12  
Handling Your Online Image As An Artist Sun 2:00pm Cascade 12  
Art Show Tour with Richard Hescox Fri 1:00pm Art Show  
Art Show Tour with Lee Moyer Sat 1:00pm Art Show  
Art Show Tour with Bryan Syme Sat 3:00pm Art Show  
Art Show Tour with Jeff Sturgeon Sat 5:00pm Art Show

# COSTUMING

- Advanced Beading and Applique Thu 4:00pm Cascade 12  
Working With Worbla Thu 5:00pm Cascade 6  
Superhero Costuming For An Un-heroic Body Thu 6:00pm Cascade 9  
Steps to Success: Costuming Best Practices Thu 8:00pm Cascade 5  
Gender-Swapping Our Superheroes Thu 9:00pm Cascade 3&4  
Costume Foundations I: Where To Start? Fri 10:00am Cascade 12  
Pyramid Power Fri 12:00pm Cascade 3&4  
Heraldry in Costuming Fri 2:00pm Cascade 2  
Are We Just Looking for Sexy? Fri 3:00pm Cascade 10  
Pantheon of the Gods: A Fashion Show & Tell Fri 4:00pm Grand 3  
Dreams of Ice & Fire Fri 5:00pm Cascade 2  
Costume Foundations II: Building the Base Fri 6:00pm Cascade 5  
Ageism in Costuming Fri 7:00pm Cascade 3&4  
Getting Medieval On Your Wardrobe Fri 8:00pm Cascade 2  
Stitch & Bitch: Fitting Clinic Fri 9:00pm Olympic 1  
Worldbuilding Through Costumes Sat 10:00am Cascade 7&8  
Costume Foundations III: Fitting It To You Sat 12:00pm Cascade 5



Cultural Fusion Sat 1:00pm Cascade 3&4

Insect Inspirations & Arachnid Antics Sat 2:00pm Cascade 2

Costume Foundations IV: Practical Embellishments Sat 3:00pm Cascade 3&4

Costuming As a Business Sat 4:00pm Cascade 2

Dystopian Future Wear Sat 5:00pm Cascade 6

Putting the "Science" Into Your SciFi Costumes Sun 1:00pm Cascade 12

When You Gotta Be Big Sun 2:00pm Cascade 7&8

Cloaks in Contemporary Media Sun 3:00pm Cascade 2

# CULTURE

- Fangirls: Who Are They & What Do They Want? Thu 5:00pm Cascade 10  
Is Fandom More Diverse & Accepting? Thu 8:00pm Cascade 6  
How To Get Laid At a Con Thu 10:00pm Cascade 9  
Creating Safe Space in a Sexually Charged Atmosphere Thu 11:00pm Cascade 10  
Feminism in Fandom Fri 10:00am Evergreen 1&2  
Invisible Disabilities Fri 11:00am Cascade 10  
Size Acceptance Is For Everybody Fri 1:00pm Cascade 10  
Intro to Health At Every Size Fri 2:00pm Cascade 10  
Cosplaying While Fat Fri 3:00pm Cascade 3&4  
Cosplay is Not Consent Fri 5:00pm Cascade 7&8  
Flirting 101 Fri 8:00pm Cascade 9  
Sex Positive Culture 101 Fri 10:00pm Cascade 10  
BDSM 101 Fri 11:00pm Cascade 10  
#WeNeedDiverseBooks Sat 11:00am Cascade 9  
What Can I Do: Being a Decent Ally Sat 12:00pm Cascade 9  
Polyamory 101 Sat 3:00pm Evergreen 1&2  
Advanced Polyamory Sat 4:00pm Evergreen 1&2

- Transphobia: A Panel for Allies of Transgender Folk Sat 6:00pm Cascade 10  
Flirting 201: Advanced Flirting Sat 8:00pm Cascade 9  
Enthusiastic Consent Sat 9:00pm Cascade 10  
Advanced BDSM Sat 10:00pm Cascade 10  
Bullies Suck: Raising Compassionate Children Sun 10:00am Cascade 3&4  
QUILT BAG: Not Your Mother's Queer Acronym Sun 11:00am Cascade 3&4  
Geek Policing: Don't Do It Sun 12:00pm Cascade 6  
Fandom In Daily Life Sun 2:00pm Cascade 3&4  
...But It Was Always So Awesome! Sun 3:00pm Cascade 7&8

# GAMING: DESIGN/THEORY

- Ingress: What Is It?** Thu 3:00pm Cascade 7&8  
**Your Grandma's a Gamer Now, Too** Thu 5:00pm Cascade 7&8  
**Gamer Etiquette: Use Your Words** Thu 8:00pm Cascade 9  
**House Rules** Thu 10:00pm Cascade 7&8  
**How Are Games & Gamers Changing the World?** Fri 12:00pm Cascade 9  
**Tabletop RPG Design: Game Design Workshop** Fri 1:00pm Cascade 5  
**Let's Playstorm an RPG Campaign** Fri 4:00pm Cascade 10  
**Prototyping Your First Tabletop Game** Fri 7:00pm Cascade 9  
**Wargaming Basics: Mustering Your Forces** Sat 11:00am Cascade 6  
**Kickstarter and Games** Sat 12:00pm Cascade 13  
**Refuse To Be Silent: Womens' Voices In Gaming** Sat 2:00pm Evergreen 1&2  
**Paint & Take** Sat 4:00pm Cascade 12  
**Creating Inclusive Gaming Groups & Events** Sat 5:00pm Cascade 10  
**Top 15 Best GM Habits** Sat 7:00pm Cascade 10  
**The Next Generation: Gaming with Kids** Sun 11:00am Cascade 10  
**Let's Playstorm a Tabletop Game** Sun 2:00pm Cascade 10

# GAMING: SCHEDULED GAMING

- Open Gaming Thu 12:00pm Rotunda 2
- All-Ages Scheduled Gaming Thu 2:00pm Maxi's Ballroom
- All-Ages Game Demos Thu 2:00pm Salon
- All-Ages Scheduled Gaming Fri 9:00am Maxi's Ballroom
- Open Gaming Fri 9:00am Rotunda 2
- All-Ages Game Demos Fri 9:00am Salon
- All-Ages Scheduled Gaming Fri 9:00pm Cascade 12
- 21+ Scheduled Gaming Fri 9:00pm Maxi's Ballroom
- All-Ages Scheduled Gaming Sat 9:00am Maxi's Ballroom
- Open Gaming Sat 9:00am Rotunda 2
- All-Ages Game Demos Sat 9:00am Salon
- All-Ages Scheduled Gaming Sat 9:00pm Cascade 12
- 21+ Scheduled Gaming Sat 9:00pm Maxi's Ballroom
- All-Ages Scheduled Gaming Sun 9:00am Maxi's Ballroom
- Open Gaming Sun 9:00am Rotunda 2
- All-Ages Game Demos Sun 9:00am Salon

# HISTORY

- Broadsword Basics Thu 6:00pm Evergreen 3&4  
One-On-One Combat for Writers Fri 10:00am Evergreen 3&4  
Universal Rules of the Fight Fri 11:00am Evergreen 3&4  
Knights Templar: From Rise to Fall Fri 2:00pm Cascade 5  
History of Jousting Fri 4:00pm Cascade 13  
Plagues That Afflicted Europe Fri 6:00pm Cascade 7&8  
Norse Sword, Shield, & Spear Tactical Combat Sat 10:00am Grand 2  
Roman Legionary Tactical Combat Sat 11:00am Grand 2  
Women Who Fought Sat 1:00pm Cascade 10  
Adding Authenticity to Historical Fiction & Fantasy Sat 3:00pm Cascade 10  
Medieval Medicine & Healing: Art of the Herb Sun 10:00am Cascade 6  
Foods of the Old World & New Sun 12:00pm Cascade 5  
Ancient & Medieval Tech: Machines In Action Sun 1:00pm Cascade 7&8

## GENRE: HORROR

- Worldwide Dead Thu 3:00pm Cascade 9  
Horror Cage Match: Short Story vs. Novel Thu 9:00pm Cascade 9  
Overlooked Horror Classics Fri 10:00am Cascade 7&8  
Women in Horror Fri 3:00pm Cascade 7&8  
Evolution of Horror Fri 6:00pm Cascade 12  
Terror In Space! Fri 9:00pm Cascade 3&4  
Horror Influences Sat 1:00pm Cascade 6  
Horror on the Small Screen Sat 2:00pm Cascade 5  
When Is It No Longer Horror? Sat 6:00pm Cascade 7&8  
Finding Horror in the Everyday Sat 10:00pm Cascade 7&8  
Independent Horror: Savior of the Horror Film? Sun 10:00am Cascade 9  
Horror As a Mirror Sun 1:00pm Cascade 5

## GENRE: SCIENCE FICTION

- The Big MacGuffin: FTL Thu 4:00pm Cascade 9  
SF Tropes We Love & Hate Thu 9:00pm Cascade 10  
The Future of the Future Fri 10:00am Cascade 3&4  
Giving Good Alien Fri 1:00pm Evergreen 1&2  
Short Stories: At the Cutting Edge of SF Fri 3:00pm Cascade 5  
Galaxy-Spanning Empires Fri 4:00pm Cascade 2  
Are Optimistic SF Stories Gone Forever? Fri 5:00pm Cascade 10  
Women In Science Fiction Fri 7:00pm Cascade 7&8  
The End is Nigh: Dystopian SF Sat 11:00am Cascade 7&8  
Robots in Military SF Sat 2:00pm Cascade 6  
Tales of Lurid Space Adventure Sat 4:00pm Cascade 6  
Expanding the Sciences in Hard SF Sat 7:00pm Cascade 5  
The Best in Recent SF Sun 1:00pm Cascade 10



## MEDIA: COMICS

- How Comics Art Has Changed Thu 9:00pm Cascade 5  
 Nuts & Bolts of Comics Writing Fri 12:00pm Cascade 2  
 Rise of the Female Superhero Fri 3:00pm Cascade 9  
 Diversity in Comics Fri 5:00pm Cascade 3&4  
 Hyper-Sexualization vs Power Fantasy Fri 7:00pm Cascade 13  
 Queer Characters: Big Two vs. Indie Producers Fri 9:00pm Cascade 2  
 When Did Comics Become a "Boy" Thing? Sat 12:00pm Cascade 3&4  
 Rise of the Superhero Comic Movie Sat 3:00pm Cascade 2  
 Othering Comic Book Villains Sat 6:00pm Cascade 6  
 Why Do We Love Superheroes? Sat 9:00pm Cascade 3&4  
 Comics on TV? Sun 12:00pm Cascade 3&4  
 The Internet: Comics' Great Equalizer? Sun 2:00pm Cascade 9

# MEDIA: LETS MAKE A MOVIE

Let's Make a Movie: Intro! Thu 3:00pm Cascade 13

Let's Make a Movie: The Magic of Special Effects Thu 5:00pm Cascade 13

Let's Make a Movie: Plan it! Fri 10:00am Cascade 13

Let's Make a Movie: Break It Down! Fri 2:00pm Cascade 6

Let's Make a Movie: What's My Motivation? Fri 3:00pm Cascade 6

Let's Make a Movie: Lights and Sound! Fri 6:00pm Cascade 6

Let's Make a Movie: Shoot It! Sat 10:00am Cascade 13

Let's Make a Movie: Edit It! Sat 6:00pm Cascade 13

Fandance Film Festival Sun 12:00pm Evergreen 1&2

## MEDIA: MODERN MEDIA

- The Book Was Better... Or Was It?** Thu 5:00pm Cascade 9  
**Why Can't They Get It Right?** Thu 8:00pm Cascade 3&4  
**Podcasting 101** Fri 11:00am Cascade 7&8  
**Building a Community** Fri 1:00pm Cascade 9  
**The Languages of Game of Thrones** Fri 5:00pm Cascade 13  
**The Future Belongs to Everyone** Fri 8:00pm Cascade 5  
**Doctor Who: Annual Review & Preview** Fri 9:00pm Cascade 13  
**Podcasting 201** Sat 11:00am Cascade 10  
**Marvel vs. DC: Off the Page** Sat 2:00pm Cascade 7&8  
**Innovation Starvation** Sat 6:00pm Cascade 3&4  
**To Reboot Or Not To Reboot** Sat 8:00pm Cascade 6  
**The Geek Secret Handshake** Sun 12:00pm Cascade 7&8  
**Movie Previews: What's New?** Sun 2:00pm Evergreen 1&2  
**Zombies Just Won't Die** Sun 3:00pm Cascade 6

## MEDIA: MUSIC

Home Recording I: Kitting Out Cheap Thu 3:00pm Cascade 2

Thursday Night Open Filk Thu 11:00pm Evergreen 1&2

Filk 101: What the Frak Is Filk? Fri 1:00pm Cascade 6

Sing Loud and Clear: Vocal Techniques Workshop Fri 2:00pm Evergreen 1&2

Introduction to Participatory Geekmusic: Filkcircle Workshop Fri 3:00pm Evergreen 1&2

Friday Night Open Filk Fri 11:00pm Evergreen 3&4

Songwriting Workshop: Crush All Genres! Sat 12:00pm Rainier

Introduction to Nerdcore: The Saturday Cypher Sat 2:00pm Evergreen 3&4

Nerdcore and Chiptunes: Newer Geekmusics 101 Sat 3:00pm Cascade 6

KidsFilk! Sat 6:00pm Olympic 1

Saturday Night Open Filk Sat 11:00pm Evergreen 1&2

Home Recording II Sun 1:00pm Cascade 6

# MILITARY

- Warrior vs. Soldier: Fight! Thu 4:00pm Cascade 7&8
- Great Military Leaders Thu 6:00pm Cascade 7&8
- Marines: From Sea & Land to Starships Fri 11:00am Cascade 6
- What-Ifs of Military History Fri 1:00pm Cascade 3&4
- Writing About the Military Fri 4:00pm Cascade 7&8
- Tanks for the Memories: Armor You Drive Fri 8:00pm Cascade 6
- Medieval Weapons: Hands On Sat 12:00pm Evergreen 3&4
- Medieval Armour: The Hard Shell Sat 1:00pm Evergreen 3&4
- Society & Military Sat 4:00pm Cascade 7&8
- Infantry Weapons: Black Powder to Lasers Sat 5:00pm Cascade 7&8
- Special Warfare Sun 12:00pm Cascade 2
- Planning a Tactical Operation Sun 3:00pm Cascade 5

# READINGS ALPHABETICAL

- Reading: A.M. Brosius Thu 10:00pm  
Reading: Alex C. Renwick Thu 6:00pm  
Reading: Arinn Dembo Sat 9:00pm  
Reading: Bijhan Valibeigi Fri 2:00pm  
Reading: Brenda Carre Sat 8:00pm  
Reading: Brenda Cooper Fri 11:00pm  
Reading: Carol Berg Sun 12:00pm  
Reading: Cat Rambo Sat 6:30pm  
Reading: Catherine Cooke Montrose Fri 8:00pm  
Reading: Craig English Sat 9:30pm  
Reading: Cymbric Early-Smith Sat 4:30pm  
Reading: Darragh Metzger Sun 12:30pm  
Reading: David J. Peterson Sat 12:30pm  
Reading: Dean Wells Fri 7:00pm  
Reading: Emmi Itaranta Fri 11:00am  
Reading: Erik Scott de Bie Fri 10:30pm  
Reading: Esther Jones Sat 2:00pm

- Reading: Frances Pauli Sat 6:00pm
- Reading: G. David Nordley Fri 5:00pm
- Reading: G. Willow Wilson Sat 5:30pm
- Reading: Gregory A. Wilson Fri 5:30pm
- Reading: GregRobin Smith Sun 11:00am
- Reading: Harold Gross Fri 10:00am
- Reading: Jack Skillingstead Sun 10:30am
- Reading: Janet Freeman-Daily Fri 2:30pm
- Reading: Jennifer Marie Brissett Fri 12:30pm
- Reading: Jeremy Zimmerman Fri 10:30am
- Reading: Jesse "fish" Kincaid Fri 8:30pm
- Reading: John (J.A.) Pitts Fri 4:00pm
- Reading: Jude-Marie Green Fri 6:30pm
- Reading: Keffy R. M. Kehrli Sat 4:00pm
- Reading: Kim Ritchie Sat 3:00pm
- Reading: Kristi Charish Fri 11:30am
- Reading: Kurt Cagle Thu 10:30pm

# READINGS ALPHABETICAL

Reading: Laura Anne Gilman Thu 6:30pm

Reading: Lauren Dixon Sat 2:30pm

Reading: Luna Lindsey Thu 9:30pm

Reading: Marta Murvosh Sat 7:30pm

Reading: Matt Youngmark Fri 9:00pm

Reading: Meg Alison Fri 12:00pm

Reading: Michael G. Munz Fri 1:00pm

Reading: Michael "Tinker" Pearce Sun 10:00am

Reading: Mike Selinker Fri 3:00pm

Reading: Morgue Anne Sat 10:00pm

Reading: Nancy Kress Sat 10:30am

Reading: Nathan Crowder Fri 9:30pm

Reading: Nicole Dieker Thu 9:00pm

Reading: Nina Post Fri 3:30pm

Reading: Pat MacEwen Fri 10:00pm

Reading: Patrick Swenson Sat 8:30pm

Reading: Randy Henderson Sat 1:30pm



Reading: Renee Stern      Fri 1:30pm  
Reading: Rod Duncan      Sat 12:00pm  
Reading: Russell Ervin    Thu 8:30pm  
Reading: S. A. Bolich      Sat 1:00pm  
Reading: Simon R Green    Sat 3:30pm  
Reading: Sonia Orin Lyris   Sun 1:30pm  
Reading: Stephanie Herman   Thu 8:00pm  
Reading: Steven Barnes    Fri 4:30pm  
Reading: Susan DeFreitas   Sat 10:00am  
Reading: Tim McDaniel    Sat 7:00pm  
Reading: Tod McCoy       Sat 5:00pm  
Reading: Tori Centanni    Fri 7:30pm

# SCIENCE: BIOLOGY

- Biology of a Zombie Apocalypse Thu 4:00pm Cascade 2  
The Future of *H. sapiens* Thu 6:00pm Cascade 3&4  
Speaking Amongst the Stars Thu 9:00pm Cascade 2  
Evolution Is Just a Theory! Fri 10:00am Cascade 10  
Anatomy of a Pandemic Fri 1:00pm Cascade 7&8  
Ask the Experts: Biology Fri 4:00pm Cascade 3&4  
The Languages of Speculative Fiction Fri 7:00pm Cascade 12  
Blinded by Pseudoscience Sat 10:00am Cascade 3&4  
Molecules of Life Sat 1:00pm Cascade 7&8  
Facts & Fictions of Cancer Sat 4:00pm Cascade 3&4  
Backyard Conservation Sat 5:00pm Cascade 5  
Ethics of Animal Experimentation Sat 7:00pm Cascade 3&4  
Cryptids & Cryptozoology Sun 11:00am Cascade 2  
Alien Harvest Sun 1:00pm Cascade 9  
Alien Communication Sun 3:00pm Cascade 3&4

## SPACE

- 2001 A Space Odyssey: Perspective From 2015 Thu 3:00pm Cascade 10  
 So You Want To Be a Rocket Scientist... Fri 12:00pm Cascade 6  
 Geology Of the Moon Fri 1:00pm Cascade 13  
 Do We Live In a Bad Neighborhood? Fri 2:00pm Cascade 7&8  
 Private Spaceflight: Is it Safe? Fri 5:00pm Cascade 6  
 Eastern Washington: A Mars Analog? Fri 8:00pm Cascade 13  
 ...And Then I Was Hooked Sat 12:00pm Cascade 10  
 Visit To a Comet Sat 1:00pm Cascade 13  
 Warnings Unheeded Sat 3:00pm Cascade 7&8  
 XCOR Lynx: Spaceship for the Masses Sat 4:00pm Cascade 13  
 Is Space Really the Old West? Sat 6:00pm Cascade 5  
 How NOT to Run a Space Program Sat 7:00pm Cascade 9  
 Challenges & Rewards of Space-Based Astronomy Sun 10:00am Cascade 10  
 The Rest of the World in Space Sun 11:00am Cascade 13  
 Planet or Not: Almost to Pluto! Sun 3:00pm Cascade 13

# TECHNOLOGY

Well, Dam Thu 3:00pm Cascade 6

The Wind Beneath My Wings: Flying Thu 5:00pm Cascade 5

Summer Is Coming Fri 12:00pm Cascade 7&8

The Machine Within Fri 3:00pm Cascade 2

The Many Facets of Carbon Fri 6:00pm Cascade 9

Wind Power: Up In the Air Fri 7:00pm Cascade 2

The Many Dimensions of 3D Printing Sat 10:00am Cascade 10

The Future of Food Sat 1:00pm Cascade 9

The Nature of Artificial Intelligence Sat 5:00pm Cascade 9

Waste: Dealing with Things We Don't Want Sat 8:00pm Cascade 10

Solid Smoke Sun 11:00am Cascade 6

Hello Mother, Hello Father Sun 2:00pm Cascade 6

# WRITING

- Writing the Other Thu 4:00pm  
Name All the Things! Thu 5:00pm Evergreen 1&2  
Outlines Thu 8:00pm Evergreen 3&4  
Building a Backstory Thu 10:00pm Cascade 3&4  
How to Write Vivid Scenes Fri 11:00am Cascade 9  
Worldbuilding 101 Fri 12:00pm Evergreen 1&2  
The Hero's Journey Fri 2:00pm Cascade 9  
Revising From Feedback Fri 4:00pm Evergreen 3&4  
Evolution of a Writing Career Fri 6:00pm  
Writing a Series Fri 8:00pm  
Pantsers & Structure Sat 12:00pm Cascade 7&8  
Flawed Heroes & Well-Meaning Villains Sat 2:00pm Cascade 9  
Forms of Plot Structure Sat 4:00pm Cascade 9  
Character Arc, Plot Arc, Story Sat 5:00pm Evergreen 1&2  
He Said, She Said: Writing Dialogue Sat 7:00pm Evergreen 3&4  
Worldbuilding: Geography Sat 8:00pm Cascade 7&8  
Write What You Don't Know Sat 9:00pm Cascade 7&8  
B Plots: Romances (or Bromances) Sun 11:00am Cascade 9  
Worldbuilding: Food is Life Sun 12:00pm Cascade 9  
Technobabble & Other Cromulent Words Sun 2:00pm Cascade 2  
Zap! Pow! Bam! Sun 3:00pm Cascade 9

# WRITING: EDITING/PUBLISHING

Dr. KindleLove: How I Learned to Relax & Love Ebooks Thu 4:00pm Cascade 3&4

The Power of Free Thu 6:00pm Cascade 10

Practice Your Pitch Thu 8:00pm Cascade 10

Marketing for People Who Hate Marketing Fri 12:00pm Cascade 13

Diversity in Spec Fic Publishing Fri 2:00pm Cascade 3&4

Next-Gen Publishing Fri 3:00pm Evergreen 3&4

Denied: A Story of Rejection Fri 6:00pm Cascade 3&4

Biggest Mistakes I Ever Made Sat 10:00am Evergreen 1&2

Your Anti-Procrastination First Aid Kit Sat 1:00pm Evergreen 1&2

First Page Idol Sat 3:00pm Cascade 9

Level Up Your Indie Skillset Sat 6:00pm Cascade 9

Worth the Dues? Sun 11:00am Cascade 7&8

Collaborative Writing Sun 12:00pm Cascade 10

Authors With Volume Sun 12:00pm Cascade 13

Be Your Own Agent Sun 2:00pm Cascade 5

## WRITING: FICTION

- Creative Insults Thu 5:00pm Cascade 3&4  
 Urban Fantasy's Hard-Boiled Detective Roots Thu 8:00pm Cascade 7&8  
 Fantasy vs. Reality Fri 11:00am Evergreen 1&2  
 Landscape of the Fantastic Fri 1:00pm Cascade 2  
 Believable Magic Fri 2:00pm Evergreen 3&4  
 Intricate Worlds Fri 5:00pm Cascade 5  
 Military Motifs in Fantasy Fri 8:00pm Cascade 3&4  
 Putting the Epic in Epic Fantasy Sat 11:00am Cascade 3&4  
 Fantasy & Monarchy Sat 1:00pm Cascade 2  
 Evolution of the Dragon in Art & Literature Sat 2:00pm Cascade 3&4  
 Building a Better Mythos Sat 5:00pm Cascade 3&4  
 The Heroine's Journey Sat 8:00pm Cascade 3&4  
 Dissecting the Weird Sun 11:00am Cascade 5  
 Where's Urban Fantasy Going? Sun 1:00pm Cascade 3&4

# WRITING: FAN FICTION

- Work In Progress Thu 6:00pm Cascade 6  
Reclaiming & Recreating Popular Culture Thu 9:00pm Cascade 7&8  
Fanart & Fanfiction Fri 12:00pm Cascade 5  
Fan Fiction vs Original Fiction Fri 4:00pm Cascade 5  
The Fine Art of Fanfiction Fri 7:00pm Cascade 5  
Exploring Sexuality & Gender Identity Through Fanfic Fri 9:00pm Cascade 10  
Fanfic Meet & Greet Fri 10:00pm Cascade 6  
Creating Crossovers Sat 11:00am Cascade 5  
Tropes & Terms Sat 3:00pm Cascade 5  
Canon, Fanon, & Fic Sat 4:00pm Cascade 5  
The Freedom of Limits: A Fanfic Workshop Sat 6:00pm Cascade 12  
Beyond Insert Tab A Into Slot B Sat 9:00pm Cascade 6  
Myths About Fan Fiction Sun 10:00am Cascade 5  
Preservation of Fanfiction & Fan History Sun 1:00pm Cascade 2



# YOUTH

- Build & Destroy a City Kaiju Style! - Kids' Session** Thu 3:00pm Olympic 1
- Friday Morning Shake-It-Up!** Fri 10:00am Olympic 1
- We Say NO to Bullies!** Fri 11:00am Olympic 1
- Baby Lounge and Quiet Hour** Fri 1:00pm Olympic 1
- Tie Dye & Fabric Printing** Fri 3:00pm Olympic 1
- Home Room, Book Exchange, & Book Discussion** Fri 7:00pm Olympic 1
- Saturday Morning Shake-It-Up!** Sat 10:00am Olympic 1
- Did You Get My Text?** Sat 11:00am Olympic 1
- Build & Destroy a City Kaiju Style! - Family Session** Sat 2:00pm Olympic 1
- Egg Hunt <5** Sun 10:00am Olympic 1
- Egg Hunt 5-8** Sun 10:30am Olympic 1
- Egg Hunt 9-12** Sun 11:00am Olympic 1
- Origami Folding** Sun 1:00pm Olympic 1
- Sunday Crafting Hour** Sun 2:00pm Olympic 1
- Baby Lounge & Quiet Hour** Sat 1:00pm Olympic 1

## MEMBERSHIP

Everyone attending Norwescon 13 years of age and over are required to fill out a membership form before receiving a membership badge. Signing the membership form indicates that you understand the rules of conduct as listed in this document and posted in our policies manual available on our website and agree to abide by them. Children 12 and under receive a free membership when attending with their parent or guardian, their membership is recorded on the adult's form.

### Membership includes:

- The right to attend the convention
- Membership badge
- Program/Souvenir Book and Pocket Programs
- Post-Con Report (for all current members)

*Your membership badge must be visibly displayed while in designated convention space. Anyone who cannot produce a current membership badge upon request will be asked to leave convention space.*

## MEMBERSHIP OF MINORS

A minor as defined by the State of Washington must have a parent/legal guardian/individual designated by the parent or legal guardian who is on-site when the minor is on-site. Minors must have a permission slip on file with Registration signed by a parent or guardian.

## BADGE REPLACEMENT FEE

If you lose your membership badge, you are encouraged to search everywhere before a new one is issued. Make sure you check with Lost and Found (both the hotel and the convention have Lost and Found departments), Registration, and Security prior to purchasing a replacement badge. There is a replacement fee of \$55 for lost badges.

## RIGHT OF REFUSAL

Norwescon reserves the right to refuse or withdraw membership.

## RULES AND POLICIES CHILD & TEEN RULES

Norwescon welcomes its young and future fans. To do this, we have programs planned throughout the convention that are geared for different age groups. Please refer to the Pocket Program for information about programming for children, tweens, and teens. A minor as defined by the State of Washington must have a parent/legal guardian/individual designated by the parent or legal guardian who is on-site when the minor is on-site. Minors must have a permission slip on file with Registration signed by a parent or guardian.

Norwescon does not accept responsibility for supervision of attending minors; that responsibil-

ity remains with the minors' parent/guardian/designee. In the event that child care is needed, The DoubleTree by Hilton Seattle Airport has a relationship with Best Sitters, Inc.; more information on Best Sitters can be found at 206-682-2556.

## HARASSMENT POLICY

Norwescon strives to provide a safe and welcoming space for persons of all descriptions. Everyone should be able to have a great time, in their own way, at the convention—but not at the expense of others. As a community, we insist on behavior that respects the autonomy of each individual member. Norwescon members and convention staff have the right to be free from unwanted harassment at the convention and while performing convention-related duties throughout the year. Harassment is behavior which focuses unwelcome attention on a person and either inappropriately crosses reasonable expectations of social boundaries, or continues after

a clear showing of disinterest or a request to desist. Harassment during the year may be reported to the Personnel executive, the person's immediate supervisor, or the chair or vice chair. At the convention, reports of harassment are handled by convention security or the Personnel executive. Any staff member wearing a convention badge may receive a report of harassment. It is each staff member's responsibility to treat a person making such a report with respect, and to offer to accompany the person to convention security or the Personnel executive. The Personnel executive may designate a person to receive reports of harassment on his or her behalf.

Violations of this policy may lead to a range of consequences based on the circumstances, from a warning to more serious steps, such as revocation of convention membership or banning from future conventions.

Convention staff are required to report all incidents brought to their attention. These incidents should

be reported to convention security or the Personnel executive as soon as possible.

## WEAPONS POLICY

*We reserve the right to inspect and reject any weapon at any time.*

*Violation of this policy in part or whole may lead to your removal from the convention by convention executive staff and from the hotel by hotel security or local authorities.*

This policy includes all real and replicated weapons of any type that may be construed as a projectile weapon or any extension of the human hand. Peacebonding will be available next to the Information Table during open registration hours and in the Security Office when the Peacebonding table is closed.

Peacebonding is required on all weapons visibly worn/carried on the hotel property including parking areas and indoor spaces. The only type of peacebonding allowed is that provided by the convention. Fashion coordinated substitutes are not sufficient.

**NO** unsheathed weapon allowed in **ANY** public space (*unless approved in advance for Masquerade or Programming event in which bonding ties will be removed for such an event and replaced immediately afterward*).

All bladed/pointed weapons will be appropriately covered in all public areas and function spaces. This includes but is not limited to: Daggers, Swords, Pikes, Axes, and Polearms, be they made of steel, plastic, or any other hard material.

Polearms, Spears, Staves, and other such weapons shall be kept upright at all times and have weapon

heads sheathed and bonded. The ends of said weapons must never project more than 12" from the bearer's body.

Some weapons are **not allowed** at all: **tazers, batons, real guns, pepper spray, crossbows, slingshots, pellet guns, water pistols, blowguns, catapults, or any type of functioning projectile** weapon.

### SPECIAL CONSIDERATION

"Airsoft-style" or "Nerf-style" weapons: At **NO** time is ammo allowed, in weapon or in magazine.

Empty magazines are **NOT** allowed in the weapon, but allowed on the belt or in a pouch for costume purposes (again **NO** ammo allowed). Bows (again, crossbows are **NOT** allowed): Arrows must be proven to be secured in such a manner as to be unable to be removed from their

container and be secured by Peacebonding the same as all other weapons.

Any obvious appearing toy “side arms” such as Disruptors, Phasers, Laser Tag pistols/rifles, laser pointers, or any other item that can project/emit light or sound shall be peacebonded and remain in an appropriate holster at all times or held in an appropriate manner. Exemptions must be authorized by qualified Security personnel.

Special consideration will be granted by the Convention Services Executive or a select designee by said Executive to Merchants or Dealers who display or show for the purpose of sale. Any weapons removed from Dealers room will fall under above guidelines.

*No weapons are allowed in Maxi's Lounge, Seaport Lounge, or Coffee Garden Restaurant.*

This Policy complies with hotel policy and local, state, and federal laws.

**THERE WILL BE NO APPEAL TO ANY VIOLATION OF THESE RULES.**

## **DRINKING**

Norwescon encourages responsible consumption of alcohol by persons over 21. As such, Washington State laws concerning alcohol consumption can and will be enforced by police, hotel security, and convention security. Norwescon also requires all parties serving alcohol to check ID.

## **PARTIES**

Guest rooms in Wing 5b and suites will be available for social events. A “social event” is a reception or open house-type event held in a guest room in Wing 5b or a hotel suite. Food and beverages may

be served in compliance with hotel, state, and local regulations. Maximum occupancy guidelines will be enforced. Service of alcohol must be in accordance with Washington State Liquor Control Board provisions. A special occasion license or banquet permit must be obtained and posted in the suite. Events that do not qualify for a special license or permit must not serve alcohol. Alcohol service times must be in accordance with state regulations. Complete Social Event guidelines are posted on the Norwescon website.

### SMOKING

Washington State law states that smoking is prohibited within a presumptively reasonable minimum distance of 25 feet from entrances, exits, windows that open, and ventilation intakes that serve an enclosed area where smoking is prohibited so as to ensure that tobacco smoke does not enter the area through entrances, exits, open windows, or other means. Smoking areas at the hotel are clearly marked.

### ANIMALS

Service animals only are allowed in Norwescon function space. Service animals will be issued convention identification at registration. Contact the hotel for their rules about animals in the guest rooms and public hotel areas.

### FLYERS

Flyers may be posted only on the paper or cloth covered kiosks that we have provided. Check at the Information Table for locations. Do not attach anything to walls, windows, or doors. The hotel and/or the convention will remove any flyers found in unauthorized places.

### SLEEPING IN HALLS AND STAIRWAYS

One word to say on this subject ... Don't.

# EVENTS

## ART IN ACTION

Come see art in action! Art in Action is a very special area where you can interact directly with artists and makers while they work. See the process unfold and ask questions as several artists, working in multiple media, show how they do it. There will also be artists and makers hosting create an item events (many for a small fee). Come down and take a look! If you like what you see, original work may be available on a limited basis. Art in Action is located on the first floor corridor just after the turn to Wing 7. The schedule of events will be posted on the wall and in the online guidebook.

## ART SHOW

**BAG CHECK:** For the safety and protection of the artwork, some personal items may have to be checked at the time you enter the art show, at the

bag check station. These items may include, but are not limited to: all bags, large coats or cloaks, and any large costume accessories that may cause safety concerns.

**BIDDING:** Your badge number is your bidding number. Write your name, badge number, and bid on the bid tag associated with the item. Remember that a written bid is a commitment to buy and you will be held to that commitment. Under no circumstances may you withdraw your bid. So, consider carefully before you place any bids. It is not fair to the artist or other potential bidders if you bid on a piece and then decide you do not want it.

**DIRECT SALE:** If you purchase a piece at the Direct Sale price, it belongs to you and will be marked SOLD. It must remain on display until Sunday morning. When you make a Direct Sale purchase, you will be given a receipt. You must present



this receipt when you come to pick up your art on Sunday.

**AUCTION:** Items with four written bids go to the Sunday Auction for voice bidding. This event is a combined Art Show and Charity auction.

**PRINT SHOP:** Many of our artists bring prints of their work. Watch for a sign in an artist's display area advertising that they have prints for sale in the Print Shop. Print Shop items can be purchased at any time during the convention. Additionally, many of our music performers have their CDs available for sale in the Art Show Print Shop.

### CLOSING CEREMONIES

The last event of the convention each year, closing ceremonies gives us a chance to say "good bye" and "thank you" to our Guests of Honor.

## MASQUERADE

Each year the Norwescon masquerade showcases the works of many of the best costumers in the Pacific Northwest and beyond. The masquerade is held Saturday night in Grand Ballrooms 2 and 3 and is open to all Norwescon attendees.

If you are interested in participating in the masquerade, there is still time. Pick up the masquerade rules and entry form at the Norwescon information table and carefully read them. You must go to one of the two masquerade panels listed in the Pocket Program, as this is where you will get all your questions answered and it is where you turn in your forms and music.

If you have never seen a masquerade, here are a few tidbits to help orient you to what to expect.

Entries are categorized by SKILL DIVISIONS. The divisions are based on the guidelines of the International Costumers Guild ([costume.org](http://costume.org)). The divisions are:

**RISING STAR** is for any contestant 16 years of age or younger who is not part of an adult group. Rising Star costumes must be made by the entrant with no more than a minimum amount of supervisory help. An adult-made costume may not be entered in this category and should instead be entered in the appropriate skill division of the adult or in the children's masquerade.

**NOVICE** is for any contestant who has not previously won an award for a costume in any masquerade, or who has won a maximum of two awards in the Novice division for different costumes at a world-class convention masquerade such as Worldcon or Costume Con, or at a regional convention masquerade such as Norwescon or Westercon.

**JOURNEYMAN** is for any contestant who has won a maximum of three awards for different costumes in the Journeyman division at a world-class or regional convention masquerade.

**MASTER** is for any contestant who has won four or more awards for different costumes in the Journeyman or Master division, or who has won one or more Best in Show awards, at a regional or world-class convention masquerade. Professional costumers must enter the Master division.

**JUDGING FOR THE MASQUERADE** has two components: Presentation and Workmanship.

### PRESENTATION JUDGING

Presentation judging evaluates the presentation as it is displayed on stage. It judges the costume's appearance from the audience, how the contestant acts and moves, the effectiveness of the music and

voiceovers, and more. The Judges give awards that are divided by skill levels and excellence of performance within those different skill levels.

### WORKMANSHIP JUDGING

Workmanship judging is optional. It takes place in the masquerade backstage area before the show begins. It allows the workmanship judges to consider exceptional accomplishment in crafting costumes, props, and accessories. This is the place where exquisite attention to detail is recognized.

During the judging process, there is a halftime presentation. During the halftime there will be an opportunity for taking photos, special announcements, and the announcement of next year's confirmed Guests of Honor, after which the masquerade awards will be presented. You will miss a lot of great things if you leave early, so please stay until the end and applaud the winners.

The Norwescon Masquerade is not broadcast live over the Norwescon TV channels, there is a tape delay to allow for an increase in broadcast quality.

### ONIONS AND ROSES

Onions and Roses is a panel held right after closing ceremonies on Sunday. At this panel the convention membership provide feedback both positive (roses) and negative (onions) to the Norwescon Chairman and Convention Services Director.

### OPENING CEREMONIES

Opening Ceremonies are held Thursday night of the convention. They are an excellent way to catch a first glimpse of our Guests of Honor as well as find out who is on the Executive Team this year.

### PHILIP K. DICK AWARD CEREMONY

The Philip K. Dick Award is presented annually for distinguished science fiction published in paper-

back original form in the United States. The Philadelphia Science Fiction Society sponsors the award and the Northwest Science Fiction Society and Norwescon sponsor the award ceremony. For more information on the award, see: <http://www.philipkdickaward.org/>

The first time the PK Dick Award was presented at Norwescon was at Norwescon 7 to William Gibson for *Neuromancer*. See your Pocket Program for the location and time of this year's ceremony.

### SINGLE PATTERN CONTEST

The single pattern contest focuses on wearable art pieces created from a preselected pattern. Each year the contest coordinator selects a pattern, which often ties in with the convention's theme. The entrants then create their designs prior to the convention. Entrants show their creations at the Single Pattern Contest Fashion Show. In addition to the Judges'

Awards, there is also a Fan Favorite Award that is given based on votes received from the audience. If you would like information on entering future Single Pattern Contests watch the Norwescon website or register for the Norwescon eNewsletter.

### SUNDAY SPECIAL EVENT

Each year in Grand Ballroom Three, a different event is held for the fun and entertainment of our membership. The Sunday Special Event for Norwescon 38 will be "Cascadia Commons... A Walk in the Square." Wind down your con with a stroll through the Cascadia Commons, this year's Sunday Event. With live performances, costume and game exchange, a "Build & Destroy" area for kids of all ages, come and mix and mingle for a relaxing hour or two before heading out! See your Pocket Program for the exact times for this event.

## SERVICES

### NORWESCON PROVIDED CLOAK ROOM

The Cloak Room is located in Wing 7, room 7101. See the Pocket Program or online guide for hours of operation. This is a free service provided by the convention for the use of convention members. The Cloak Room is for temporary storage of parcels, coats, and bags, and is not meant as a substitute hotel room or food locker. Please make other arrangements for inappropriate items. We reserve the right to refuse any article.

Norwescon is not responsible for items left in the Cloak Room. Use of the room is at your own risk. We suggest that before you place your items in the room, you make certain to understand the hours the room will be open. There is a 25¢ charge for lost claim tags.

## CONVENTION AND SECURITY OFFICES

The nerve centers of the convention are the Convention Offices located in Wing 7. The main Convention Office is located in room 7106 while the Convention Security Office is in 7108. You can find one of these open all hours of the day to help iron out any wrinkles you may encounter.

## DAILY 'ZINE

Norwescon's official Daily 'Zine contains news of the day from around the con and last minute schedule changes. After 9:00 am, copies of the 'zine can be found in numerous locations throughout the convention.

## GUIDEBOOK

In addition to the pocket program, Norwescon provides access to the information online via guidebook. Guidebook is user-friendly on iPhones, Android phones, Blackberries, and any other devices

that you might use. There is a native app for iPhone and Android and a mobile web app for everything else. Access it via [guidebook.com/getit](http://guidebook.com/getit)

## INFORMATION TABLE

Information about the convention, the hotel, and the local area can be found at the Information Table, which is located in the convention lobby, across from Registration. This is also where you pick up your convention bag and recycle pocket programs. If you have questions after the Information Table closes, you can go to the Convention Office in room 7106 or the Security Office in room 7108.

## LOST & FOUND

The Lost & Found is located in 7108, Convention Security. If you lose something during the convention, be sure to check both with the convention's Lost & Found and with the hotel. If it does not turn up right away, check back on Sunday afternoon; as

sometimes things take a little while to be discovered and filter in.

Unclaimed articles left in the Cloak Room after 4 p.m. on Sunday will either go into the hotel's Lost & Found or will go home with Norwescon's Lost & Found Manager. Determination of which location items will be placed will depend on their nature - luggage and like items will be placed with the hotel's Lost & Found, miscellaneous objects and small items with the Norwescon Lost & Found. Again, please be sure to check with both the convention and the hotel's Lost & Found departments for items that you may have misplaced during the convention. After the convention, inquiries about lost items can be made to [info@norwescon.org](mailto:info@norwescon.org) or 100 Andover Park W Suite 150-165 Tukwila, WA 98188-2828. Inquiries should also be made with the hotel. Lost items will be kept until July 1 of the convention year. After that date, any unclaimed items will

be auctioned at the Volunteer Picnic, with the proceeds going to the Northwest Science Fiction Society (NWSFS).

## PEACEBONDING

SEE RULES AND POLICIES: Weapons Policy

## TEENS AND TEEN RUNNERS

Norwescon recognizes that the future of convention attendees and volunteering staff will come from the teens currently attending the convention with their parents. In an effort to give you, our younger members, the opportunity to gain firsthand experience, and a behind the scenes look into the world of conventions, Norwescon implemented the "Teen Runner" program. If you are between the ages of 13 and 17, and you are looking for things to do at the convention, stop by Volunteers and try your hand in helping out as a Runner. There are jobs in areas such as: Registration, Technical Services, Office

Service, Volunteers, Masquerade, and Dispatch that have jobs, suitable for teenagers and are vital to the convention.

### VOODOO MESSAGE BOARD

Have you ever wanted to know if your friends have arrived at the con? Have you ever wanted to leave a message for somebody but didn't know if they are staying in a room?

Norwescon offers members a way to leave messages for each other by means of a Voodoo Message Board. The board is located by the restrooms near Registration and will have a list of all pre-registered convention members. When you get to the convention, please place a check mark next to your name or add your name to the list in alphabetical order. This will let others know that you are on-site and will be checking for messages.

### VOLUNTEERING

Norwescon runs on volunteers without them there would be no convention. As such, everybody is encouraged to volunteer at the convention for a few hours. There are many things that you can volunteer for that still let you attend certain events. As a bonus, volunteers who have helped at any time during the con have early entry into the Masquerade; may attend a special event arranged for them; are invited to a post-con party during the summer; may be entered in drawings for special gifts; and receive tokens to show our appreciation. Go to the Volunteer Table in the convention lobby or the Volunteer Office and sign up for a shift (or two, or three, or four, or five).

The volunteer office does not provide babysitting. Minors may volunteer with permission of their parent/guardian/designee but should not be dropped off at the office without a specific purpose. In the



event that child care is needed, The DoubleTree by Hilton Seattle Airport has a relationship with Best Sitters, Inc.; more information on Best Sitters can be found at 206-682-2556.

## HOTEL PROVIDED

### HOTEL SHUTTLE

The hotel shuttle can transport you to SeaTac International Airport, the light rail station and the Hilton. Check with the Concierge for availability, departure, and return times.

### POOL AND HOT TUB

The pool and hot tub are open to hotel guests 24 hours a day and can be accessed with a hotel room key. The pool and hot tub will be closed for scheduled cleaning and maintenance during part of the day. Please read the pool and hot tub rules posted in that area. The rules must be obeyed if we want to keep this area open for the weekend.

### INTERNET ACCESS

High speed internet (DSL) access is available in all guest rooms during Norwescon for a fee. Please call the hotel front desk for access.

### PARKING

The Hotel has a monitored parking system. There are four entry gates into the hotel parking lot. Tickets are dispensed at each gate and payment is made as you leave or in one of the marked kiosks in the hotel lobby. Off-site parking is available nearby as well.

### HOTEL PARKING RATES

- The first car registered to each room is free.
- Any additional cars registered to the same hotel room are charged \$8.00 per day and receive in/out privileges.
- Attendees who drive to the convention, but do not stay at the hotel, will be charged \$8.00 per 24-

hour day with NO in/out privileges.

- Motorcycles are charged the same convention rate of \$8.00 per 24-hour day. There are no special motorcycle parking spaces and a standard parking space must be used.
- If you are pulling a trailer and use more than one space, the parking fee will be based on the number of parking stalls you use.
- Handicapped parking stalls are charged the same convention rate of \$8.00 per day.

Parking is always limited at Norwescon. Do not park in fire lanes. Do not park in spaces marked for those with disabilities unless you have a valid handicap permit. Only park in marked parking spaces. Vehicles parked in unauthorized areas (including that which is set aside for reserved parking spaces) will be towed. Please park legally and walk the distance rather than parking where you should not. There are many parking lots in the area and some provide transport to and from the airport and hotel.

## DOUBLETREE RESTAURANTS AND BARS

### New Thunderbird Market,

Open 5am to 11pm

Now offering an expanded menu with breakfast pastries from Alki Bakery and Macrina Bakery in Seattle, house breakfast sandwiches and wraps, cereals, oatmeal, Greek yogurt, fruit, Beecher's cheese, American salami, Seattle Chocolate truffles, and a wide array of dry snacks, chips and munchies for your eating pleasure. For lunch and dinner we are proud to serve locally made samosas, gluten free cupcakes from Bellevue, house made individual pizzas, a variety of fresh sandwiches, blackened salmon salad, macaroni & cheese, and a fantastic selection of desserts...but wait, there's more! Featuring a fabulous selection of 22oz. northwest micro brews and craft sodas, as well a great little selection of northwest wines in small format. You have to try the blanc de blanc from Treveri in Walla Walla. Cel-

celebrate in style! Last but not least, be sure to stop by and grab a Chewbacca dog 2.0. Last year's was a hit. Come and check out what the chefs have created for your taste buds this year.

### **Introducing the Fishbowl Grill! So Long and Thanks for All the Fish!**

Our chefs will be serving up burgers, veggie burgers and Chewbacca dogs for lunch from 11am until we slow down off of our new Evo grills. Also featuring great northwest microbrews to keep your thirst quenched and give you just the right attitude to enjoy the show!

### **Lunch in the Coffee Garden**

The Coffee Garden will be open for lunch each day from 11am to 4:30pm and will offer the same fabulous menu that the chefs have created for Seaports. Chowder, nachos, chicken tenders, salads, sandwiches and even buffalo! That's right I said it...

American bison is on the menu this year. It's fabulous and leaner than beef (if you're into that sort of thing...).

### **China Town in the Coffee Garden**

China Town in the Coffee Garden? Yes that's right: Thursday, Friday, and Saturday night our chefs will produce some of the finest Chinese food south of China Town from 5pm to 9pm. For \$15 you can get your Chinese on in our restaurant until you just can't eat anymore! Come join us for Chinese buffet, a break from the convention and possibly, maybe... even some kung fu movies for your viewing pleasure...

### **Seaports Open from 11am—1am(ish), depending on How Thirsty You Are!**

Come and partake in a Pan Galactic Gargle Blaster experience, great micro brews on tap, and our fabulous new wine list. Seaport's will feature draft

specials all weekend long as well as all of your Northwest and comfort food favorites.

## Room Service

Room service is available 6 a.m. to midnight daily. Dial 22 on your hotel room phone to access this hotel service.

## NEW ALLERGY PROCEDURES

We take food allergies very seriously. So seriously that we created an SOP (Standard Operating Procedure) for handling these very special orders (yes, I have to write SOPs). Each allergy order is handled with care as a hand written ticket is created by the server, delivered to the chef, and accompanies the dish throughout the execution and delivery of the meal. You can rest assured that our team will pay very close attention to handling and expediting each and every allergy sensitive order.

## LOCAL AREA RESTAURANTS

**13 Coins** - 18000 International Blvd. (206-243-9500) Five minute walk north of hotel. Serving up hearty fare 24 hours a day, 365 days a year.

**Denny's** - 18623 International Blvd. (206-248-1558) Across the road from our hotel. Open 24 hours.

**Dave's Diner and Brew** - 19204 International Blvd. (206-277-7196) 2 minute walk. Classic diner food. Diner open 6 am - 10 pm; Lounge open until 12 am.

**Jack-In-The-Box** - 2840 South 188th (206-244-6293) Across International Blvd. from our hotel, featuring the new Jack "butter" burger. Open 24 hours.

**L&L Hawaiian Barbecue** - 18613 International Blvd., Bldg. B-3 (206-432-9646) Across International Blvd. from our hotel. The name says it all, Hawaiian style BBQ and other Hawaiian staples. Monday - Saturday 9am - 11pm; Sunday 10am - 9pm

**Mango Thai Cuisine & Bar** - 18613 International Blvd (206-243-1888) Across International Blvd. from our hotel. Casual, contemporary eatery offering a varied menu of classic Thai dishes & handcrafted cocktails. Monday - Friday 11am - 10pm; Saturday - Sunday 12pm - 10pm

**Masae's Teriyaki** - 19021 International Blvd. (206-241-6231) South on International Blvd. from the hotel, just past the Days Inn. Japanese food. Thursday - Saturday 11am - 9pm. Closed Sunday.

**Sharp's Roaster & Ale House** - 18427 International Blvd. (206-241-5744) Across from hotel. Features rotisserie chicken, baby back ribs, smoked meats, and American food. Dining room open until 10pm. The Bent Prop Pub is open until 1am on Friday and Saturday.

**Subway** - 18613 International Blvd. (206-436-8570) In the WallyPark across from the hotel. Sandwiches and salads. Thursday - Saturday 8am - 12am; Sunday 9am - 12am.

**Taco Bell** - 18812 International Blvd. (206-243-8171) Across 188th from the hotel. Thursday 7am - 1am; Friday - Saturday 7am - 2am; Sunday 7am - 1am.

## CONVENIENCE STORES

**7-11** - 20008 International Boulevard (206-824-3984) South on International Blvd. from our hotel, just past the Day's Inn.

**7-11** - 3120 S 176th St (206-242-4559) North on International Blvd. from our hotel and right on 176th. Near the Hilton

**7-11** - 19023 International Blvd (206-243-8854) South on International Blvd. from our hotel.

## GROCERY STORES

**Costco** - 400 Costco Drive (206-575-9191)  
15 minute drive east of hotel. Open Monday - Friday 8:00 am - 8:30 pm; Saturday 9:30 am - 6:00 pm; Sunday 10:00 am - 6:00 pm.  
Costco membership required.

**Safeway** - 4011 S. 164th (206-244-2567) Includes a Deli, Bakery, Pharmacy, Starbucks, Video, and Liquor departments. Open 24 Hours

## BANKS & ATMS

There is an ATM in the hotel lobby. There is a Chase bank at the north end of the parking lot it is a full-service bank with ATM. The Safeway listed above has a Wells Fargo bank and ATM.

## TIPS FOR MAKING YOUR CONVENTION EXPERIENCE THE BEST

Attach your badge to the outside of your outfit. It saves you from having to fish it out when asked by door guards or convention security.

Remember to carry your identification (driver's licenses, state identification, etc.) with you at all

times. Identification is required at the hotel bars and room parties. Also, remember to bring money or your credit card you never know when you will see something you want in the Dealers' Room or the Art Show.

*You may be asked to provide your identification for entry into events and panels labeled "A" for adult or 18+ with ID. Without your ID you may be refused entry.*

Floor 14 is limited to 21+ with photo ID from 8:00 p.m. – 3 a.m. on Friday and Saturday night; carry your ID or you might have to make the elevator journey twice.

Carry the Pocket Program with you so that you know what's happening and where to find it. Highlight the panels you want to attend so that you don't miss them.

Check out the online schedule and calendar; sync the appropriate one with your smart phone.

Pick up a Daily 'zine every morning to learn of any changes to the daily schedule.

Check out the Voodoo Message Board daily to see if you have messages.

Stop by Hospitality to see who you know and who you want to know.

Smile and say "Hi" to the people around you! You never know who is standing next to you. They may be the next big author or artist. Then you can say "I knew them when ..."

Volunteer, it's a great way to get to know people.

